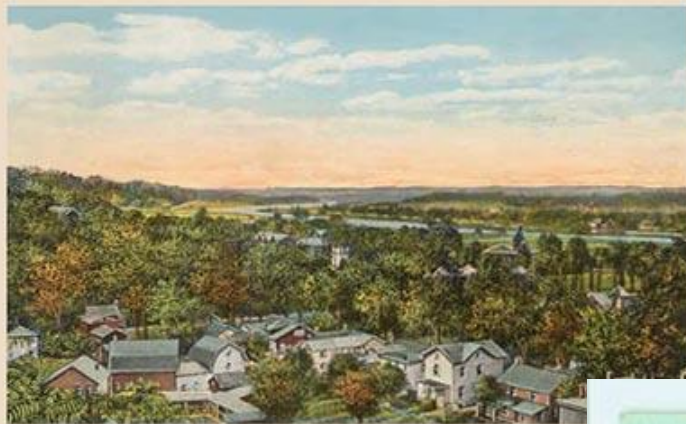


FONDA

& surrounding area



N. Y. CENTRAL R. R. STATION, FONDA, N. Y.



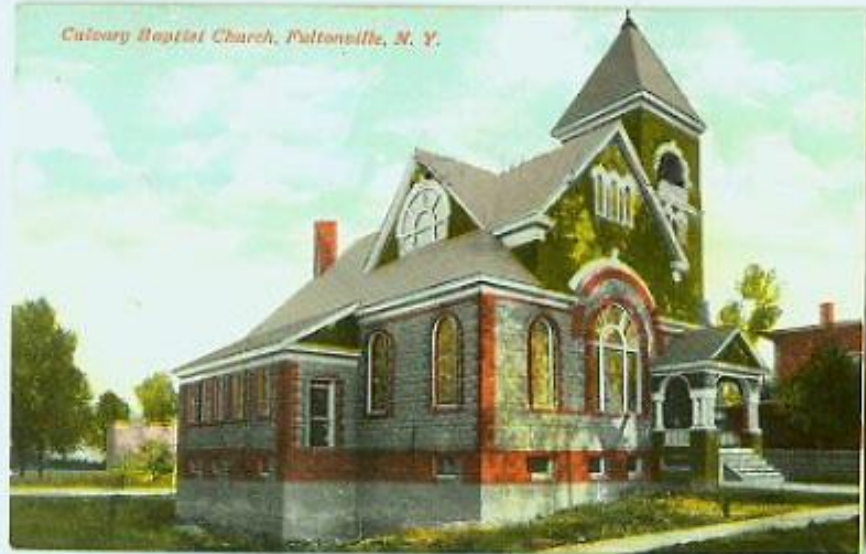
BIRD'S EYE VIEW, FONDA, N. Y.



The Walter Butler House, Switzer Hill near Fonda, N. Y. Erected 1742



Main Street, Fonda, N. Y.



Calvary Baptist Church, Paltonville, N. Y.



Cayadutta Creek, Fonda, N. Y.
Just arrived after having a pine 4-18-04
Arthur Smith



Lodging for a Night
DUNCAN HINES
Clover Leaf
MOTEL

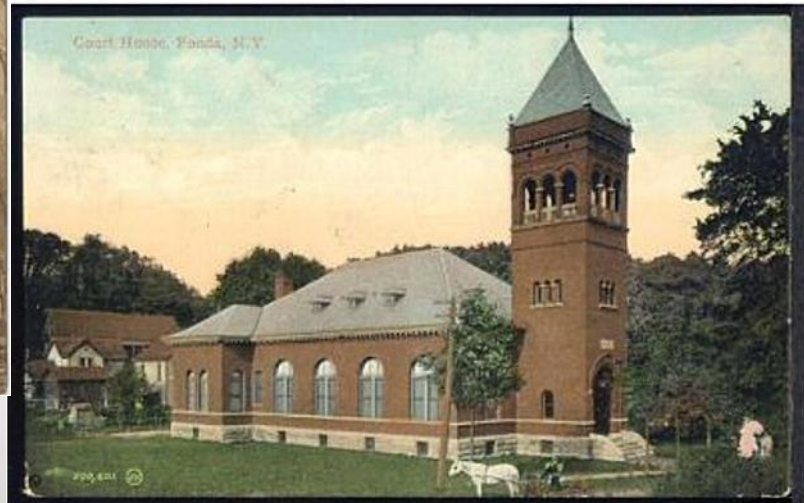
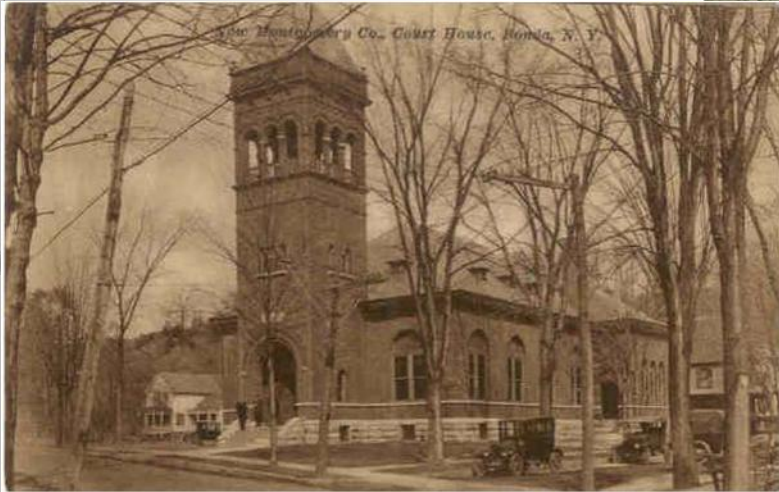


Selected by
EMMONS WALKER



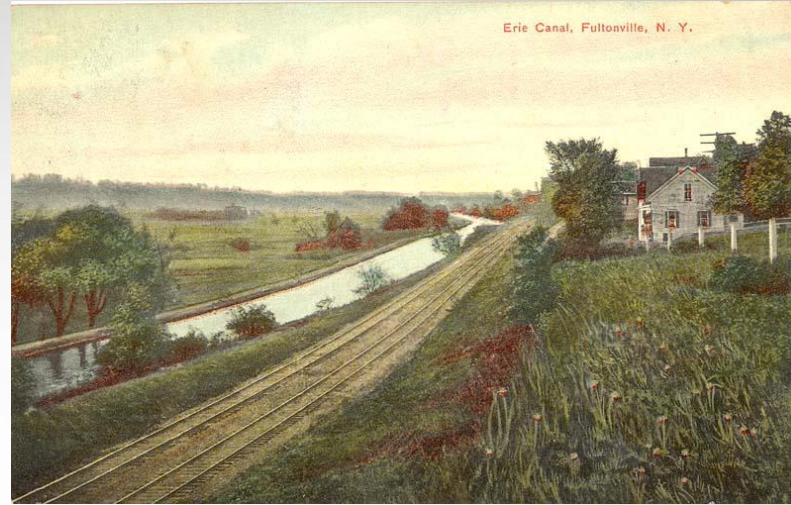
100 Yards from Thruway Exit 28 Fultenville, N. Y.







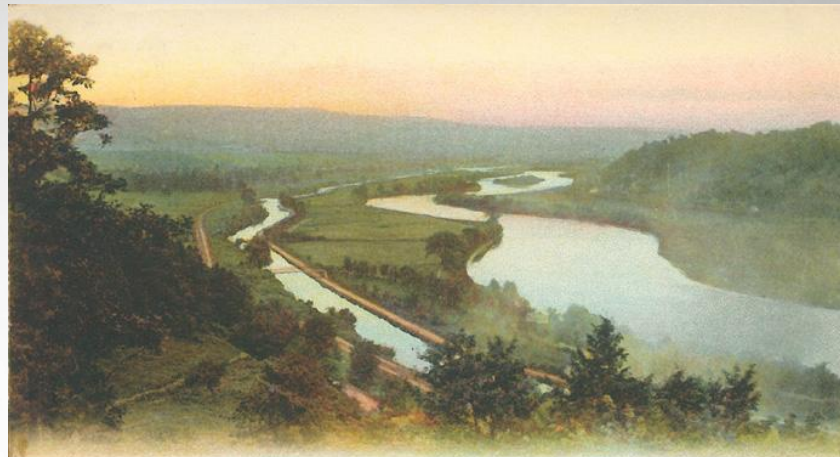
Douw Fonda, Born 1701, Died 1780.
Founder of Fonda, N. Y.







John W. Inveris, Pub. MAIN STREET, FONDA, N. Y.

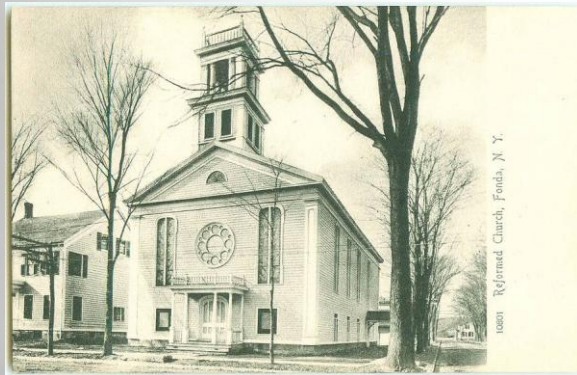


Copyright 1905 by the Holograph Co.
G 4370 Mohawk Valley, N. Y.

Jelles Fonda Homestead, Built About 1795, Fonda, N. Y.



Mohawk River, Fonda, N.Y.

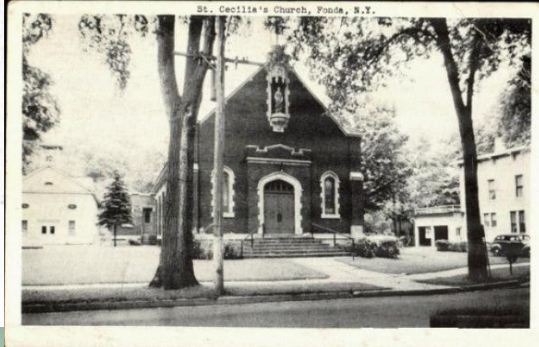




Pappy Douw Fonda's Home, built about 1781, Cayadutta Street, Fonda, N. Y.



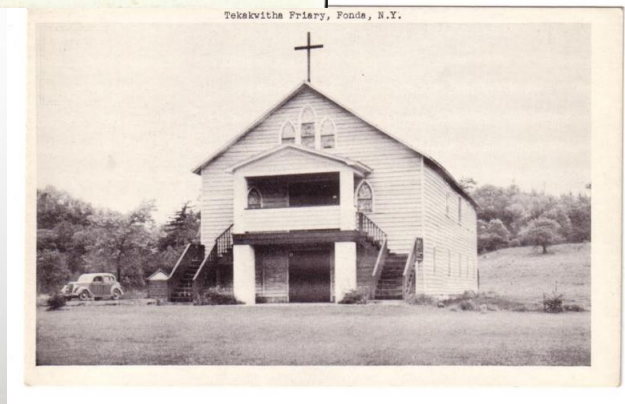
The Tara Ann Motel



St. Cecilia's Church, Fonda, N.Y.



Hotel Roy (Erected 1888), Fonda, N.Y.



Tokakwitha Priory, Fonda, N.Y.